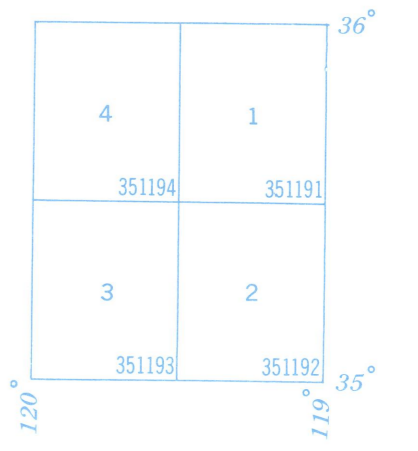


Each 30 minute quadrangle shown in blue is identified in the southeast corner by a six digit number showing successively degrees of latitude, degrees of longitude, and position in the one degree quadrangle.

Note: Data may be requested by quadrangle, county, or other unit. Since publication of data on quadrangle maps may not be complete for this State, requests for information by quadrangle number will be supplied with data as whatever form is available.



U.S. DEPARTMENT OF COMMERCE
 NATIONAL OCEANIC AND ATMOSPHERIC ADMINISTRATION
 NATIONAL OCEAN SURVEY
 WASHINGTON, D.C.
 March, 1976

**INDEX MAP - CONTROL LEVELING
 STATE OF CALIFORNIA
 (SOUTHERN SECTION)**

Information may be obtained from the
 Director, National Geodetic Survey, Information Center,
 National Ocean Survey, S.O.A., Rockville, MD, 20852

